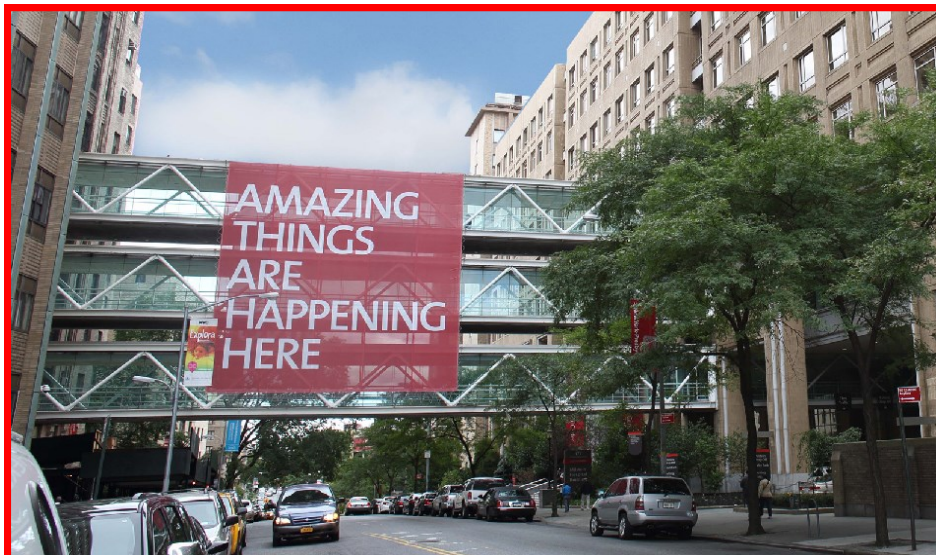




Department of Pharmacy
622 West 168th Street, VC-B
New York, NY 10032

<http://www.nyp.org/pharmacy>



New York-Presbyterian

PGY2 Pharmacy Residency Program
Internal Medicine



NewYork-Presbyterian Hospital is the largest, not-for-profit, non-sectarian hospital in New York. With more than 2,600 beds, it provides state-of-the-art inpatient, ambulatory, and preventive care in all areas of medicine at seven major centers: Weill Cornell Medical Center, Columbia University Irving Medical Center, Morgan Stanley Children's Hospital, Phyllis and David Komansky Center for Children's Health, Lower Manhattan Hospital, The Allen Hospital, and Westchester Division.

As one of the largest and most comprehensive healthcare institutions in the world, NewYork-Presbyterian Hospital is committed to excellence in patient care, research, education, and community service. It ranks tenth on the U.S. News & World Report's guide to Best Hospitals. This academic medical center has affiliations with two of the nation's leading medical colleges: Weill Cornell Medical College and Columbia University Vagelos College of Physicians and Surgeons.

With our dedicated staff, modern facilities, state-of-the-art technology, commitment to quality care, and role in educating future physicians, NewYork-Presbyterian Hospital has earned a reputation as a healthcare leader. Whether providing specialty care to the tiniest newborns, performing complex cardiothoracic surgeries, or offering comprehensive primary care, NewYork-Presbyterian Hospital delivers excellence in healthcare with compassion and care.

At NewYork-Presbyterian Hospital we aim to provide pharmacy residents with the most comprehensive and advanced training possible. With nearly 50 dedicated clinical pharmacy specialists, pharmacy is an integral member of the health care team. With hundreds of pharmacy personnel, and world-renowned surgeons and physicians, we ensure that our residents graduate from the program as competent and independent practitioners.

We hope you are interested in joining our team!



Columbia University Irving Medical Center Preceptors



Weill Cornell Medical Center Preceptors

Notes

Program Overview

The NewYork-Presbyterian (NYP) Hospital Internal Medicine Pharmacy residency program is a 12 month full-time, post-graduate year two (PGY2) training program. The program provides extensive training opportunities in the inpatient and ambulatory care settings. Internal medicine rotations are provided across academic and community hospital settings.

Our residency program is committed to providing residents with the knowledge and skills necessary to become capable pharmacy practitioners. These include:

- Participation in multidisciplinary rounds by providing pharmaceutical care to hospitalized patients
- Participation in the care of ambulatory care patients
- Development of precepting and teaching skills by co-precepting students on rotation
- Participation in pharmacy practice management activities to increase understanding of the role of pharmacy in the healthcare system
- Completion of a research project related to the internal medicine practice

Employment Information

Duration:	12 months
Positions:	1
Starting Date:	July 1, 2019
Estimated Stipend:	\$51,500
Application Deadline:	January 3, 2019
Interview Required:	Yes

Benefits

Additional benefits include health, dental, and life insurance, sick leave, paid time off, and travel reimbursement for professional meetings. Residents also qualify for on-site subsidized housing, if available.

Curriculum

All residents are required to complete rotations in core subject areas considered essential to providing a well-rounded experience. In addition, a wide variety of elective rotations are offered, allowing residents flexibility in pursuing their individual areas of interest.

Required Rotations

- Orientation & Training	4 weeks
- Internal Medicine	20 weeks
- Antibiotic Stewardship	4 weeks
- Critical Care	4 weeks
- Ambulatory Care	Longitudinal (6 months)

Elective Rotations

- Emergency Medicine
- Solid Tumor Malignancies
- Solid Organ Transplant
- Drug Information
- Practice Management

Required Longitudinal Experiences

- Research Project
- Weekend staffing/pharmacokinetics

Additional learning experiences include the development of teaching skills by providing in-services and Grand Round presentations to pharmacy staff and other health care providers, critically evaluating literature, and leading case-based discussions.

Meet Our Current PGY2 Residents

PGY2 Hematology/Oncology Residents

Rachel Abramova, PharmD

PharmD: St. John's University
PGY1: NewYork-Presbyterian Hospital

Stephanie Monaco, PharmD

PharmD: University of Utah
PGY1: Veterans Affairs Salt Lake City Health System

PGY2 Solid Organ Transplantation Resident

Hannah Underwood, PharmD

PharmD: University of Kentucky
PGY1: University of Illinois at Chicago

PGY2 Critical Care Residents

Andrew Mina, PharmD

PharmD: University of the Sciences in Philadelphia
PGY1: Hackensack University Medical Center

Grace Shinn, PharmD

PharmD: Loma Linda University
PGY1: NewYork-Presbyterian Hospital

PGY2 Infectious Diseases Resident

Jamie John, PharmD

PharmD: Rutgers University
PGY1: Christiana Care Health System

PGY1/2 Health System Pharmacy Administration Residents

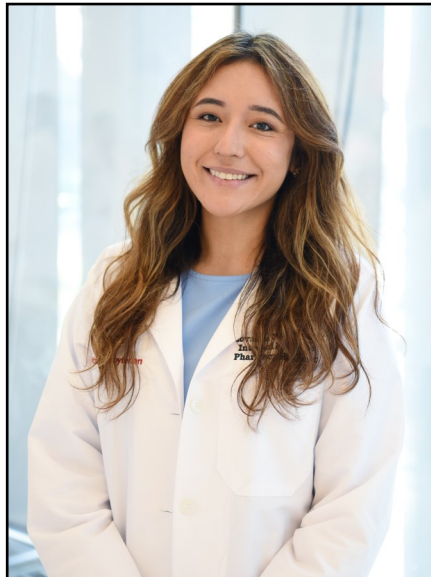
PGY2: **Brenna Johnson, PharmD**

PharmD: Wayne State University

PGY1: **Mohak Dave, PharmD**

PharmD: University of the Sciences in Philadelphia

Meet Our Current Resident



Giovanna Middlebrook, PharmD

PGY2 Internal Medicine Pharmacy Resident

NewYork-Presbyterian Hospital

Email: gim9048@nyp.org

PharmD: University of South Florida College of Pharmacy

PGY1: Boca Raton Regional Hospital

Meet Our Current PGY1 Residents

Alexandra Della Pia, PharmD

PharmD: Fairleigh Dickinson University

Meghan Thornberg, PharmD

PharmD: University of Pittsburgh School of Pharmacy

Shawnee Daniel, PharmD

PharmD: Loma Linda University

Rza Abasov, PharmD

PharmD: Rutgers University

Application Requirements

Admission to the residency program is available to PharmD graduates of accredited colleges of pharmacy after completing a PGY1 residency program (or equivalent). Residents must be United States citizens or carry a permanent resident visa. New York licensure is required.

A limited (Intern) permit, issued by the office of Professions – New York State Board of Pharmacy, is necessary until licensure as a pharmacist in New York is obtained.

NYP Residency Programs participate in the ASHP-associated Pharmacy Online Residency Centralized Application Service (PhORCAS). To apply for the residency program, the following items must be submitted through PhORCAS by the due date to be considered for an on-site interview:

- Letter of intent stating goals and interests
- Curriculum vitae
- Three references in PhORCAS
- Official college transcripts

For additional information, please contact:

Leigh Efird, PharmD, MPH, BCPS

Director of Pharmacy Services, Transitions of Care and Ambulatory Care

PGY2 Internal Medicine Residency Program Director

NewYork-Presbyterian Hospital

Department of Pharmacy

525 East 68th Street, K-04

New York, NY 10065

Email : lee9015@nyp.org

Phone : 212-746-3483

Meet Our Preceptors

Internal Medicine

Ijeoma Ekeocha, PharmD
Cardiology

Helene Maltz, PharmD, BCPS
Heart Failure

Yasmin Saafan, PharmD, BCPS
Internal Medicine

Grace Shyh, PharmD, BCPS, BCACP
Internal Medicine

Jessica Snead, PharmD, BCPS, BCGP
Internal Medicine

Antimicrobial Stewardship

Christine Kubin, PharmD, BCPS-
AQID
Infectious Diseases

Angela Loo, PharmD, BCPS-AQID
Infectious Diseases

Shawn Mazur, PharmD
Infectious Diseases

Monica Mehta, PharmD, BCPS,
MPH
Infectious Diseases

Brian Nelson, PharmD
Infectious Diseases

Critical Care

Karen Berger, PharmD, BCPS, BCCCP
Neurocritical Care

Alana Ciolek, PharmD, BCPS
Cardiothoracic Critical Care

Caroline Der Nigoghossian, PharmD,
BCCCP
Neurocritical Care

Amy Dzierba, PharmD, FCCM, FCCP,
BCPS, BCCCP
Medical Critical Care

Audrey Littlefield, PharmD, BCPS,
BCCCP
Cardiothoracic Critical Care

Karlene Ma, PharmD, BCPS
Coronary Critical Care

Justin Muir, PharmD
Medical Critical Care

Teresa Poon, PharmD
Adult Critical Care

Brittany Verkerk, PharmD
Adult Critical Care

Corey Witenko, PharmD, BCPS, BCCCP
Surgical Critical Care

Liz G. Ramos, BS, PharmD, BCPS,
BCCCP
Medical Critical Care

Meet Our Preceptors

Drug Information

Mary Giouroukakis
Drug Information

Emergency Medicine

Leanne Svoboda, PharmD, BCPS,
BCPPS
Emergency Medicine

Practice Management

Leigh Efird, PharmD, MPH, BCPS
Internal Medicine

Jorie Frasiolas, PharmD, BCPS
Regulatory

Lindsay Hovestreydt, PharmD, BCPS
Special Projects

Solid Organ Transplantation

Jessica Hedvat, PharmD
Kidney/Pancreas Transplantation

Nicholas Lange, PharmD, BCPS
Kidney/Pancreas Transplantation

Hanna (Jennifer) Lee, PharmD, BCPS
Kidney/Pancreas Transplantation

Esther Liu, PharmD, BCPS
Kidney/Pancreas Transplantation

David Salerno, PharmD
Liver Transplantation

Solid Tumor Malignancies

Michelle Nguyen, PharmD, BCOP
Hematology/Oncology

Ambulatory Care

Hanlin Li, PharmD, BCACP
Telepharmacy/Chronic Kidney
Diseases

Khusbu Patel, PharmD, BCACP, BCGP
Family Medicine

Erin Turingan, PharmD, MS
Ambulatory Care