

## Concrete Pours Begin; Cranes Expected Before Summer's End

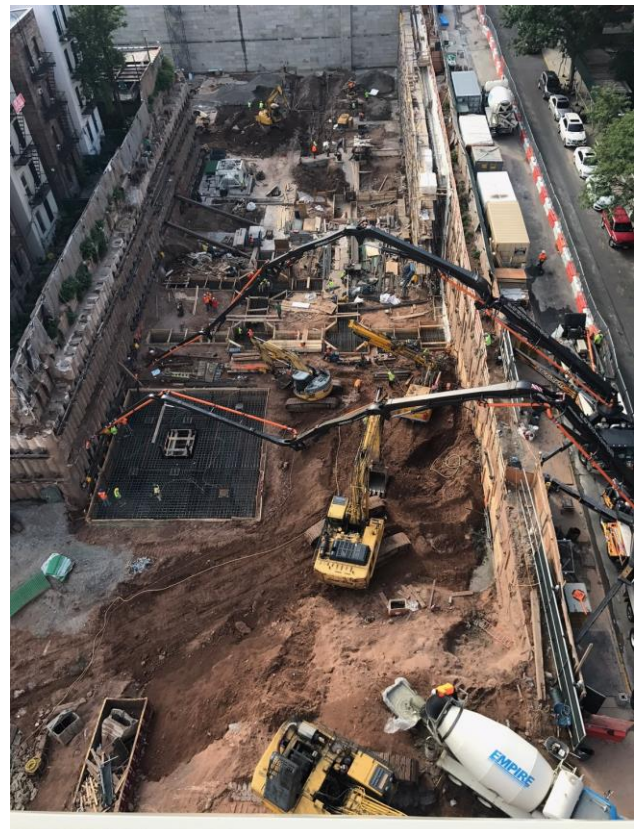
The project's first two large concrete pours occurred during July on two separate days. Disruption to the community appears to have been minimal and several young children were delighted with the entertainment provided.

Work on Con Edison vaults on Fifth Street are expected to begin in August. This operation will impact the sidewalk and parking lane for approximately 100 feet from the Eighth Avenue corner on Fifth Street. The sidewalk and parking lane will be closed for a period of about two to three months. Pedestrians will be directed to the opposite side of the street. The construction of these vaults will require a limited amount of trucking on Fifth Street for the concrete operation. Notification regarding trucking dates will be distributed as work is scheduled.

Site protection drawings and permits have been approved by the Department of Buildings. The installation of backyard scaffolding and roof protection on the "core properties" (the buildings on the south side of Fifth Street that are located between the east and west sides of the new building) will take place in August. Scaffolding will then be installed around the Hospital's parking deck and the sidewalk around the perimeter of the site.

Fifth and Sixth Street sewer work will also take place before summer's end. Like the site utility

work performed in June and July, this work will intermittently impact traffic and parking. The schedule will be coordinated to mitigate the impact on Fifth Street as much as possible. It may be that this work will overlap with the installation of the Con Ed vaults.



**West Tower Crane Foundation installation**

## Upcoming Work

The current construction work hours are Monday through Friday, from 7:00 a.m. until 6:00 p.m.

When there is a need to make up for delays due to weather or other unforeseen circumstances, work is done between 9 a.m. and 5 p.m. on *occasional Saturdays*. No trucking, concrete pours or other noisy work occurs on Saturdays.

### August 13th – August 19th

- Excavation and foundation work to continue.
- Preparation for steel installation to continue.
- Sidewalk bridge and protection installation to continue.
- Con Ed vault construction to commence.

### August 20th—August 26th

- Excavation and foundation work to continue.
- Preparation for steel installation to continue.
- Sixth Street sewer installation to begin.
- ConEd Vault construction to continue.

### August 27th—September 2nd

- Excavation and foundation work to be substantially completed.
- Preparation for tower crane installation.
- Sixth Street sewer Installation to continue.
- ConEd vault construction to continue.

### September 3rd—September 9th

- *Monday, September 4th*  
*Labor Day – No Work Scheduled.*
- Sixth Street sewer Installation to be completed.
- (tentative) Begin tower crane Installation.

### September 11th—15th

- Tower crane Installation to continue.
- ConEd Vault construction to continue.

## For More Information...

This newsletter and previous issues are available at [nyp.org/Brooklyn](http://nyp.org/Brooklyn). Click on the "Center for Community Health Construction Update" tile. Interested members of the community can also request that the newsletter be sent directly to their email addresses by making this request to Lyn Hill at [lyh9001@nyp.org](mailto:lyh9001@nyp.org).

In addition, a number of relevant documents, including the Building Monitoring Plan submitted to and accepted by the Landmarks Preservation Commission, can be accessed at: <https://projects.lendlease.com/PrologConverge/WebClient/navigate.aspx?projguid=46778806-5e94-4f44-beb9-8e404a4bb6cf&Req=folder&no msg=1&Key=26344>.

**User name: Community Task Force**

**Password: CTF11215**

Questions/concerns about the project may be addressed to:

Lyn S. Hill, Vice President for Communication and External Affairs

at [lyh9001@nyp.org](mailto:lyh9001@nyp.org) or (718) 780-3301.

Questions/concerns about the construction should be addressed to:

Sharon Stern, Community-Project PR Liaison at Lendlease, (212) 592