

The Pancreas Program



┌ NewYork-Presbyterian
└ Weill Cornell Medical Center

Center for
Advanced Digestive Care



NewYork-Presbyterian/Weill Cornell Medical Center Pancreas Program

The Center for Advanced Digestive Care (CADC) at NewYork-Presbyterian/Weill Cornell Medical Center is one of the nation's leading multidisciplinary centers for the diagnosis and treatment of digestive diseases. By bringing together skilled specialists, comprehensive programs and groundbreaking therapies, we provide patients with exceptional digestive disease care in one convenient environment.

An important component of the CADC, our Pancreas Program provides patients with comprehensive, compassionate and seamless integrated care for various diseases affecting the pancreas, including pancreatic cancer, acute and chronic pancreatitis, pancreatic cysts and pseudocysts, pancreatic necrosis, pancreatic ductal disorders, neuroendocrine tumors, stones or blockages and pancreatic divisum. In addition to providing patients with renowned expertise and advanced therapies, we are conducting pioneering research with the goal of expanding treatment options. Coupled with robust patient education and support programs, we are one of just a few facilities in the country to provide such a comprehensive approach to pancreatic care.

Innovative technologies such as Confocal Endomicroscopy lead to early detection and higher cure rates of Pancreatic Cancer

Our Approach

Pancreatic diseases are often complex to diagnose and treat, and our multidisciplinary team of experts work together to foster early diagnosis and intervention and to ensure the best possible outcomes for our patients. We provide compassionate, personal care across many disciplines, collaborating as a team to determine the optimal approach for each patient. At the same time, we're committed to providing a high level of support and to reducing stress and anxiety for our patients and their families.

The Multidisciplinary Team

Patients benefit from the expertise of an array of disciplines, including gastroenterology, diagnostic and interventional radiology, interventional advanced endoscopy, medical and gastrointestinal oncology, surgery, anesthesiology, pathology, transplant, nutrition, social work, pain management, clinical research and genetic counseling. In addition, our nurses serve in key roles as dedicated care coordinators to help patients and families efficiently communicate with their physicians and navigate care plans.

What Sets Us Apart

Our Pancreas Program is unique in many ways, including the following:

- The program is one of only a handful in the country to provide such a coordinated, streamlined level of care for cancerous and non-cancerous pancreatic conditions.

- We are committed to seeing referred patients within 48 hours to expedite the care process.
- As part of our truly collaborative approach, the care plan for every patient is discussed by the multidisciplinary team at weekly case conferences, and referring physicians are welcome to participate.
- The one-on-one assistance of our care coordinators simplifies and personalizes the care process for our patients, and enables them to have multiple appointments and procedures on the same day.
- Our center is the only one in the region performing advanced minimally invasive interventional procedures like EUS-guided ERCP and advanced diagnostic procedures such as pancreatic confocal endomicroscopy.
- Pancreatic patients often receive care on our 28-room unit specially designed for patients with digestive diseases, Greenberg 14 North. Since its opening in 2009, this unit has consistently maintained patient satisfaction scores in the 99th percentile of hospitals nationwide.
- Our surgical outcomes and mortality rates are better than the national rates.
- Use of minimally invasive palliative procedures provide for unparalleled pain management.

Advanced Technology and Procedures

Depending on the needs of each patient, we offer a range of diagnostic and treatment options for pancreatic conditions. These include advanced imaging tools for earlier detection, like 3D CT angiography and PET to stage pancreatic cancer, high-resolution 3D magnetic resonance cholangiopancreatography and confocal endomicroscopy. Minimally invasive endoscopic techniques like EUS-guided ERCP enable a tissue-sparing approach and allow us to simultaneously diagnose and correct certain problems without the need for open surgery. We are also adept at handling post-surgical complexities, which are common with pancreatic conditions.

As a transplant center, we offer full organ pancreas transplantation and are the only center in the region evaluating islet cell transplantation as the next generation of care for patients with chronic pancreatitis and type 1 diabetes. We also have the capability to use robotic surgery to treat certain pancreatic conditions, such as the removal of pre-malignant lesions and tumors.

Patient Support

Along with ongoing support from the multidisciplinary team and care coordinators, we offer educational seminars, support groups and pancreatic cancer awareness efforts to promote early detection and treatment. Our relationship with the Pancreatic Cancer Action Network (PANCAN) helps amplify

these efforts. We also place a strong emphasis on effective pain management and palliative care to relieve pain and ensure adequate nutrition. In addition, genetic counseling and testing is available for those with a family history of pancreatic cancer or those with pancreatic cancer who also have a family history of certain other types of cancer.

Clinical Research

Through a robust research program that includes database and registry protocols capturing all endoscopic data, we are working to advance diagnostic technology, assess new therapies and improve patient outcomes for those with benign and malignant pancreatic conditions. Our ongoing clinical research includes studies evaluating pancreatic stenting, radiofrequency ablation for pancreatic cancer treatment, confocal endomicroscopy for the early diagnosis of pancreatic diseases and novel stents for pancreatic pseudocyst drainage and pancreatic necrosis debridement. Our scientists are also studying the cellular and genetic basis of pancreatic cancer and tumor progression in an effort to develop innovative and effective cures.

For More Information

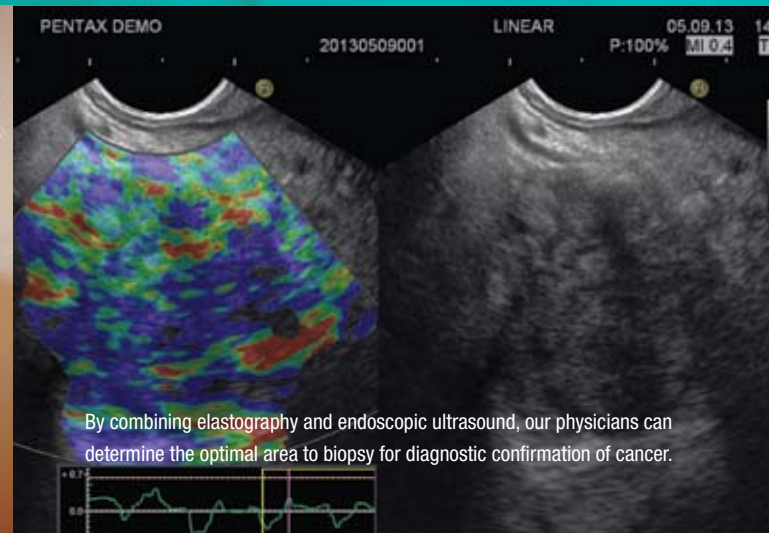
To learn more about our Pancreas Program, to refer a patient or to schedule an appointment, please contact us at 877-902-2232 (877-902-CADC). You can also visit us online at nyp.org/cadc.



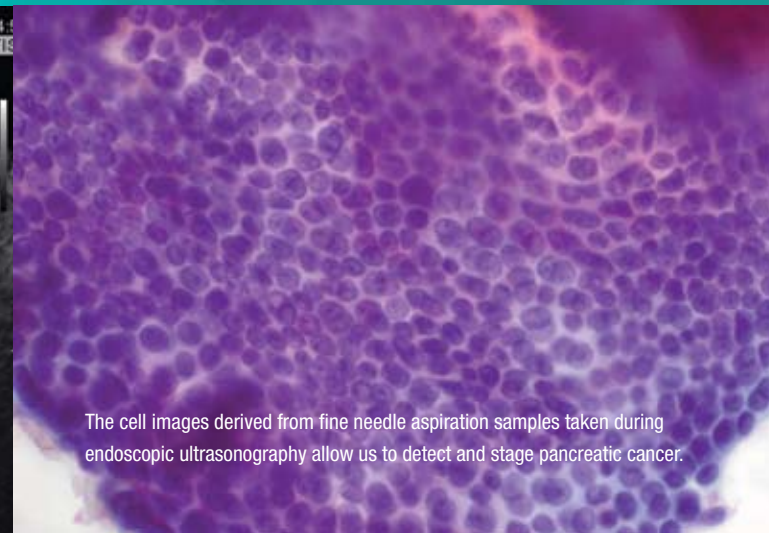
Pancreas Program Leadership

Michael D. Lieberman, M.D., *Director of Surgical Oncology, Surgical Director, Pancreas Program*

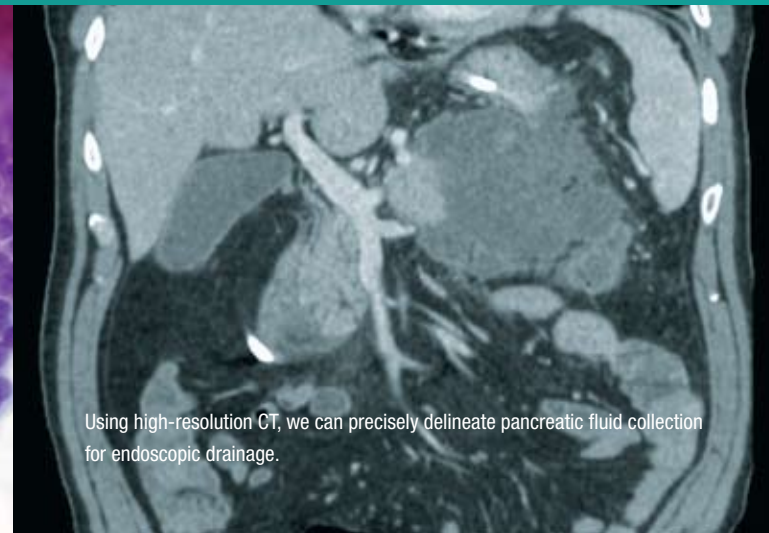
Michel Kahaleh, M.D., *Chief of Endoscopy, Medical Director, Pancreas Program*



By combining elastography and endoscopic ultrasound, our physicians can determine the optimal area to biopsy for diagnostic confirmation of cancer.



The cell images derived from fine needle aspiration samples taken during endoscopic ultrasonography allow us to detect and stage pancreatic cancer.



Using high-resolution CT, we can precisely delineate pancreatic fluid collection for endoscopic drainage.